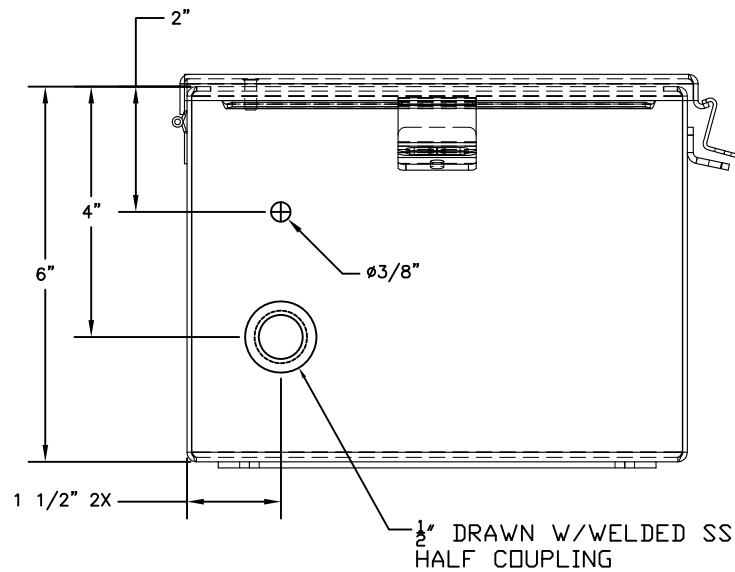


TERMINAL NOMENCLATURE

- 4
- [TB1]
- (GRY) 101
 - (GRY) 102
 - (GRY) 103
 - (GRY) 104
 - (GRY) 105
 - (GRY) 106
 - (GRY) 107
 - (GRY) 108
 - (GRY) 109
 - (GRY) 110
 - (GRY) 111
 - (GRY) 112
 - (GRY) 113
 - (GRY) 114
 - (GRY) 115
 - (GRY) 116
 - (GRY) 117
 - (GRY) 118
 - (GRY) 119
 - (GRY) 120
 - (GRY) 121
 - (GRY) 122
 - (GRY) 123
 - (GRY) 124



NOTES:
1. REFERENCE D1-24877-02.



INTEGRATED FLOW SOLUTIONS

6461 REYNOLDS RD, TYLER, TEXAS, USA 75708
PHONE NUMBER: +1 (903) 595-6511
FAX NUMBER: +1 (903) 595-4861

THIS DRAWING IS THE PROPERTY OF INTEGRATED FLOW SOLUTIONS AND SHALL NOT BE REPRODUCED, COPIED, LENT, NOR USED FOR ANY PURPOSE OTHER THAN THAT WHICH IT IS FURNISHED EXCEPT BY WRITTEN PERMISSION.

REV.	DATE	DESCRIPTION	BY
1	26AUG09	APPROVED FOR CONSTRUCTION	WJS

INTI POWER INC.
DUPLEX GAS FUEL FILTER SKID
TAG NUMBER: TBD
PURCHASE ORDER NUMBER: 20090720-001

ENGINEERED BY: CHUCK McDONALD
APPROVED/DATE:
DESIGNED BY: WILLIAM SHEPHERD
CHECKED/DATE:
PROJECT MANAGER: LOURDES AGUILAR

DUPLEX GAS FUEL FILTER SKID DIGITAL JUNCTION BOX LAYOUT BILL OF MATERIALS

CLIENT: INTI POWER INC.

SCALE: NTS	SECTION	JOB	SHEET	TOTAL SHEETS	REV.
DATE: AUGUST 25, 2009	D1 - 24877 - 01			2	1